

EW 1/EW 2/C 1 C 2

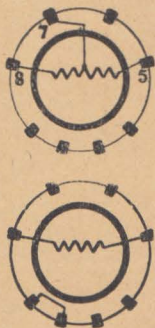
EW 12

C 10

EU XIII/KS 1200

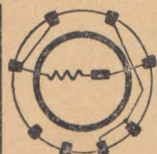
C 12

C 3/C 8

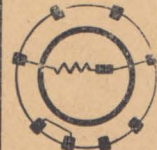


# Stromregelröhren / Current Stabilisers / Lampes régulatrices de courant

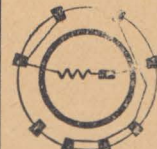
Osram Type	Philips Type	Stabilisiert: Stabilizet: Stabilise	Spannungsabfall Voltage drop Chute de tension
EU VI	—	200 mA	110—220 V
EU VII	C 4	"	50—100 V
EU VIII	C 6	"	75—150 V
EU IX	—	"	95—190 V
EU X	C 7	"	35—70 V
EU XII/KS1200	—	"	85—170 V
EU XIII/KS1320	—	"	25—50 V
EU XX	—	"	35—70 V
—	C 1/C 8	"	80—200 V
—	C 2/C 10	"	35—100 V
—	EW 1	"	80—240 V
—	EW 2	"	35—105 V
—	EW 12	"	(80—240 V (5-8) (35—105 V (7-8))
—	C 3	"	100—200 V
—	C 9	"	35—100 V
—	C 12	"	(80—200 V (5-8) (35—100 V (5-7))



EU VII/C 4



EU VI

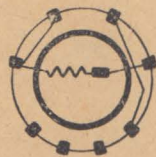
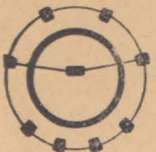


EU X/EU XX/KS 1320

## Prüfung erfolgt nur in Stellung 12.

Ob in den anderen Stellungen das Signal „F“ angezeigt wird oder nicht ist ohne Belang f. die Prüfung.

Measurement is only in Position 12  
Mesure est seulement en Position 12

EU VIII  
C VI  
EU XIIU 920  
U 1220/3  
U 1220/6  
U 2020  
U 3620  
U 4520Unbrauchbar  
mauvais / BadG u t  
Good / Bon